

**GLOBAL
FORUM ON
CYBER
EXPERTISE**

GFCE SPONSOR PACKAGE

2025-2026



The GFCE, 10 years of Cyber Capacity Building

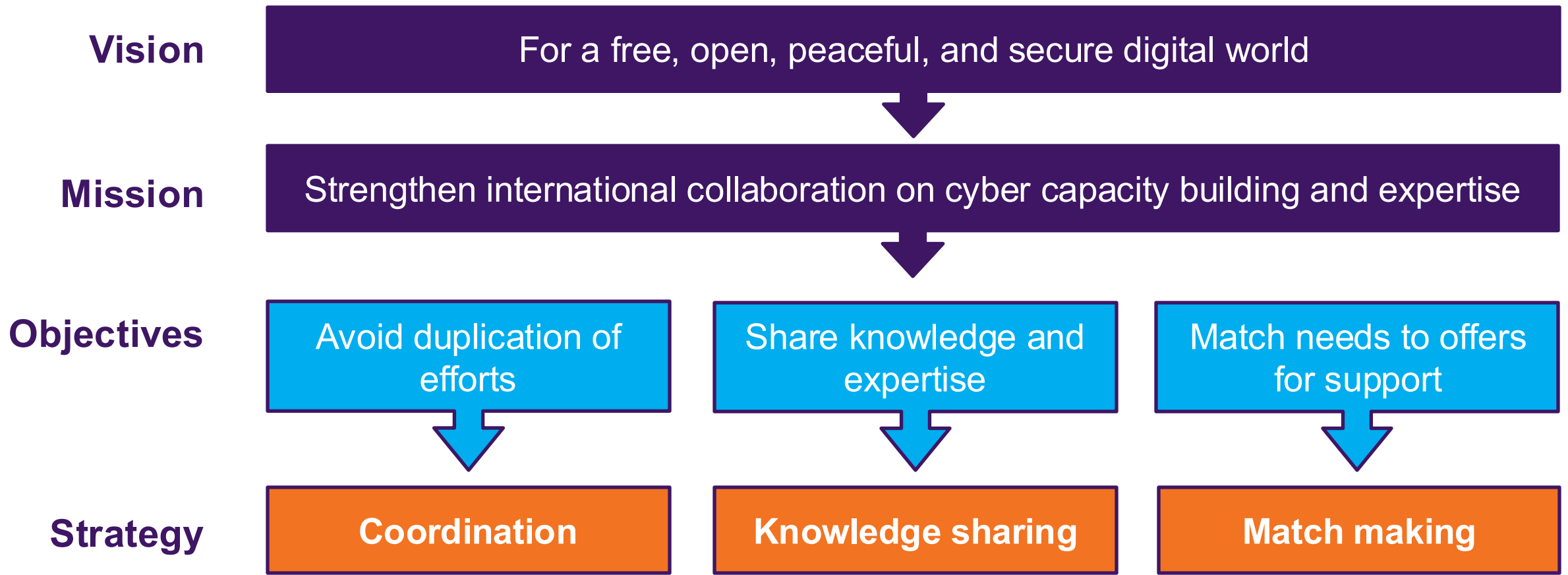


The Global Forum on Cyber Expertise (GFCE) is a **global multistakeholder platform for strengthening international cooperation on cyber capacity building**. Established in 2015 with 42 members, the GFCE currently celebrates a community of **260+ members and partners** across the globe. By connecting resources, skills, and expertise, countries strengthen their cyber resilience which serves as a crucial precondition to build their Digital Economies.

Through international cooperation and coordinating international efforts on cyber capacity building, together we aim to **ensure a free, open, and secure digital world**.



GFCE Strategic Objectives



Why sponsor the GFCE?



- Empower the international efforts of the GFCE on strengthening global cyber capacity building.
- Realize **great visibility** among relevant stakeholders on a global and regional level.
- Demonstrate **thought leadership** within your field of expertise and get **access to a trusted network** of both public and private organizations.
- Anticipate the raised opportunities based on **identified cyber capacity needs and gaps** in the regions.



Sponsorship Opportunities Overview



This sponsorship package outlines several **opportunities to support the GFCE**. Details of each option are provided on the following slides. Additionally, we are happy to **collaborate on a customized proposal** to help expand other initiatives.

Sponsorship Opportunities Overview	Fee		
All-inclusive package (featuring the highest level from each option below)	Fixed rate €47.5		
Global Event sponsor	Platinum €35K	Gold €25K	Silver €15K
Regional Event Sponsor	Medium €10K		Small €7.5K
Regional Hub Sponsor	Fixed rate €15K		
Global Working Group Sponsor	Medium €7.5K		Small €5K
Cybil Portal Sponsor	Fixed rate €5K		

All-inclusive package: €47.5K



This all-inclusive package, offered at a fixed rate of **€47,500**, includes **all top-tier options listed in this Sponsor Package**, such as speaking opportunities and visibility at **6 in-person events** around the globe as well as **25-30 online events**.

Organizations selecting the all-inclusive sponsorship package are recognized as **GFCE Key Strategic Partners**.



1.0 GFCE Event Sponsor



About

Throughout the year, the GFCE organizes several **in-person meetings**:

- **One global Annual Meeting.**
- **Five regional meetings** (Africa, Southeast Asia, Americas and Caribbean, Pacific, and Europe).

Sponsor benefits

- **Great visibility** among attendees.
- **Access to a trusted network of public and private organizations**, including government representatives.
- Actively **demonstrate thought leadership** in a specific field of expertise.



1.1 GFCE Event Sponsor – Annual Meeting



Sponsoring the Annual Meeting includes sponsoring the Regional Meeting in the AM host region.

Sponsor benefits	Platinum €35K	Gold €25K	Silver €15K
Online and on-site visibility	✓	✓	✓
Visibility on content screens	✓	✓	✓
Recognition in the aftermovie	✓	✓	
Exhibitor booth to showcase your organization's products/services	Large	Medium	Small
Access to a bilateral room	✓	✓	✓
Keynote speaking opportunity	✓		
Panel speaking opportunity	✓	✓	
Logo on the badge	✓		
Recognition as lunch break sponsor		✓	
Recognition as evening reception sponsor	✓		

1.2 GFCE Event Sponsor – Regional Meeting



Sponsor benefits	Medium €10K	Small €7.5K
Online and on-site visibility	✓	✓
Visibility on content screens	✓	✓
Keynote speaking opportunity	✓	
Panel speaking opportunity	✓	✓
Logo on the badge	✓	
Recognition as coffee and lunch break sponsor	✓	

2. GFCE Regional Hub Sponsor: €15K



About

The Regional Hubs enable the GFCE to locally address members' interests, needs, and CCB offerings.

Activities: regional meetings, workshops, local needs assessments, working group meetings, etc.



Sponsor benefits – based on sponsoring one Regional Hub

- Online and on-site visibility at the annual **Regional Meeting**.
- Online and on-site visibility of **regional Working Group meetings**.
- Recognition during **regional needs assessments**.
- Visibility at **all other activities** initiated by the regional hub (workshops, webinars, etc.).

3.0 Global Working Group sponsor



About

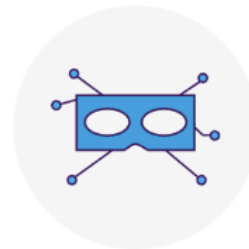
The Working Groups come together on a regular basis, both in-person (during the Global Annual Meeting) and online (6-8 online meetings per year).



**Cybersecurity Policy
and Strategy**



**Cyber Incident
Management and
Critical Infrastructure
Protection**



Cybercrime



**Cybersecurity Culture
and Skills**



**Emerging
Technologies**



3.1 Global Working Group sponsor



Sponsor Benefits

- **Demonstrating thought leadership**, based on your field of expertise.
- **Showcasing your products and services** that offer solutions for the issues raised during the Working Group sessions.
- **Access to a relevant global public/private network**, related to the Working Group theme.

Sponsor benefits – based on sponsoring one Working Group	Medium €7.5K	Small €5K
Your logo will be displayed during in-person and online WG sessions	✓	✓
Your organization will have a speaking slot during each of the WG sessions (in-person and online)	✓	
Online visibility through GFCE channels (newsletter, social media, website)	✓	✓

4. Cybil Portal Sponsor: €5K



About

Cybil is a knowledge portal for the global cyber capacity building community. It is a unique source of information on:

- Tools
- Publications
- Activities on CCB globally Online repository for global CCB projects.
- Upcoming events
- Working Group outcomes

On a monthly basis, Cybil has **21,000+ unique page visits**. The portal shows more than 1,000 cyber capacity building projects, structured by region.

Sponsor benefits

- Online visibility with your logo on clear display on the website and a social media post welcoming your sponsorship.
- Thought leadership on CCB.



GFCE's impact at a glance



Strategic Steering Committee: community-driven committee guiding the GFCE Foundation to align with the priorities of the GFCE community. The SSC's *Strategic Guidance 2025-2027* provides transparency and is a quality guarantor for GFCE's activities/services.

GFCE community: 260+ members and partners (growing everyday)

GLOBAL MEETINGS

- Annual Meeting
- GC3B (Global Conference on Cyber Capacity Building)

REGIONAL HUBS

- 5 hubs
- Local needs assessments
- Regional Meetings and activities

WORKING GROUPS

- 5 WG's
- 85% of community involved
- Online/offline meetings

CYBIL PORTAL

- Unique online repository of global CCB projects
- 21k+ unique monthly page visits

**GLOBAL
FORUM ON
CYBER
EXPERTISE**

PLEASE CONTACT US AT

CONTACT@THEGFCE.ORG

THANK YOU!

